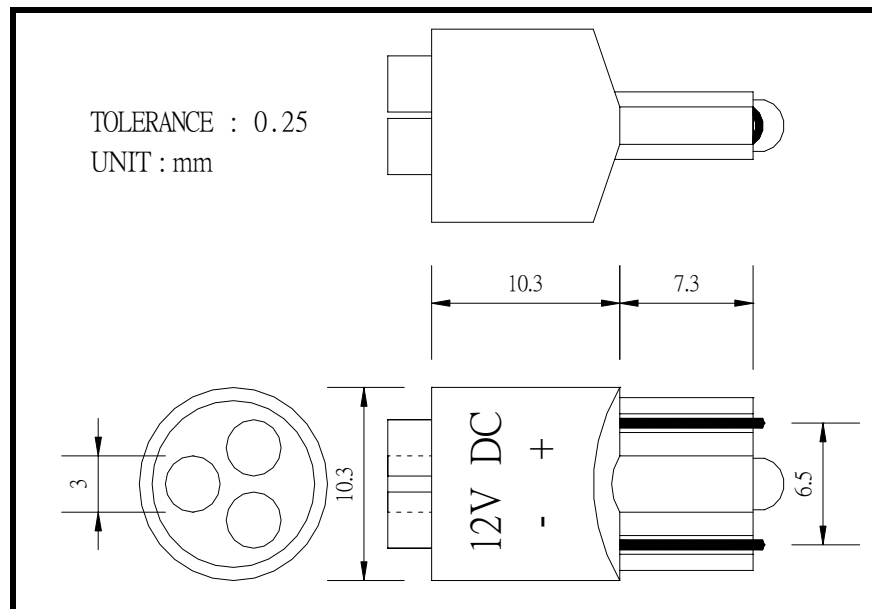




ROYAL LIGHT ELECTRONICS CO., LTD.



LHTT103C-00303xxx BASED LED Technical Specification

Technical Specification

Description

Our BASED LED light uses the latest technology, LED light engines which are available in a range of led colours and beam angles.

Benefit from long life, low power, low maintenance and low heat.

- Contains 3 x 0.065W high lumen Ø3 LEDs
- Colours include: **White**, **Red**, **Green**, **Blue**, **Yellow**.
- LEDs with over 20K hours life

Specification

ITEM	Parameter	Description
Input Voltage	DC 5V or 12V or 24V	
LED Qty	3 Pieces	
Driver Model	Constant Current	
Beam Angle	120°	
Luminous Flux	--	--
Housing Material	PC Plastic	
Product Size each	Ø10*20mm	
Q'ty per Case	1000PCS	

Part Number	EMITTING COLOR	Applied Voltage	Luminous intensity (mcd)	Wavelength λ d(nm) or x,y	Viewing angle
LHTT103C-0303V2C	Red	5V,12V,24V	120	630	120°
LHTT103C-0303Y2C	Yellow	5V,12V,24V	120	590	120°
LHTT103C-03031B2C	Bule	5V,12V,24V	180	470	120°
LHTT103C-0303PG7C	Green	5V,12V,24V	600	525	120°
LHTT103C-03031W2C	White	5V,12V,24V	360	X=0.30 , Y=0.31	120°

*LHTT103C-0303xxC C= Water Clear

*LHTT103C-0303xxT T= Color Transparent